



# OUTDOOR MACHINES

## LOG BANDSAW • 660 MM

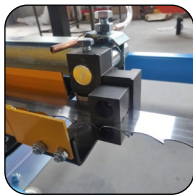
### SAG660



Product sheet



Emergency stop button



Adjustable guide and blade guard



Log holding system



Log holding system

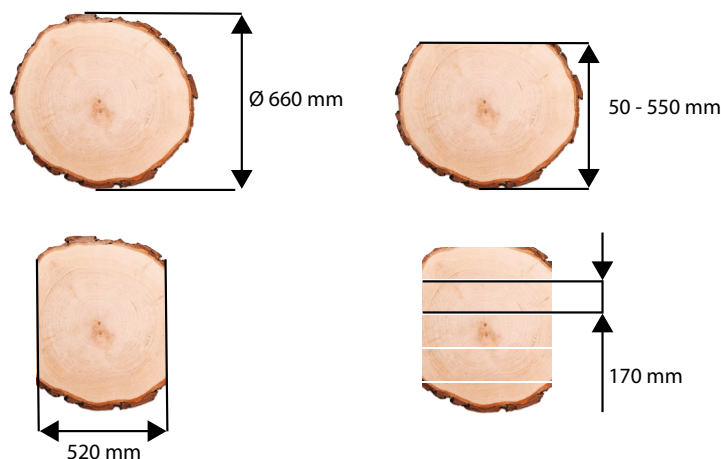
### Specifications

- Caution : for outdoor use only.
- Compact mobile sawmill designed for loggers, carpenters and private individuals.
- Suitable for making boards, planks and beams.
- Autonomous operation thanks to its 15 HP LONCIN gasoline engine (motor oil not supplied).
- Machine supplied with a 1,95 m extension track for a total cutting length of 3,6 m. Additional extensions available as option for different cutting lengths.
- Adjustable clamping device to hold the log securely.
- Manual advance cutting carriage equipped with anti-tilting bars.
- Emergency stop button.
- Manual adjustment of the cutting height by crank with scale.
- Cast iron flywheels with a cleaning brush for each of them.
- Cooling and lubrication system to keep the blade clean, without resin.
- Blade tension adjustment by an ergonomic handle.
- Safety switch on the blade guard.
- The machine comes with 1 blade 22 mm pitch, collant system, 1 rail extension 1950 mm, 2 pcs clamping device, spanners, instructions manual but the engine is delivered without oil or fuel.



Consult our 8000 references  
and find the options of this machine on our website





## Technical data

<b>WARRANTY</b>	2
<b>Engine type Fuel</b>	Four-stroke, air cooling
<b>Motor</b>	LONCIN G420F
<b>Displacement / Motor power</b>	420 cc / 15 HP
<b>Fuel tank capacity</b>	6,5 L
<b>Fuel</b>	Gasoline SP95 (not supplied)
<b>Oil tank capacity</b>	1,1 L
<b>Oil type</b>	SAE 10W30 (not supplied)
<b>Starting system</b>	Manual, recoil starter
<b>Dimensions</b>	1900 x 4180 x 1730 mm
<b>Rotation speed</b>	4000 rpm
<b>Min./Max. cutting height</b>	50 mm / 550 mm
<b>Blade dimensions</b>	3658 x 32 x 1,1 mm
<b>Flywheel diameter</b>	475 mm
<b>Cutting speed</b>	20 m/s
<b>Cutting width</b>	520 mm
<b>Cutting depth</b>	170 mm
<b>Max. log diameter</b>	660 mm
<b>Min./Max. log length</b>	1050 mm / 3600 mm
<b>Log loading</b>	Manual
<b>Cutting carriage advance</b>	Manual
<b>Sound pressure LpA</b>	90,5 dB(A) no load
<b>Sound power LwA</b>	107,4 dB(A) no load
<b>Uncertainty k</b>	4 dB(A)
<b>Net weight</b>	340 kg
<b>Spare parts reference</b>	300900 (+ N°/ exploded view)
<b>Barcode</b>	3661589117397
<b>Packing</b>	2180 x 640 x 880 mm
<b>Gross weight</b>	382 kg