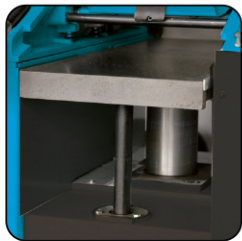


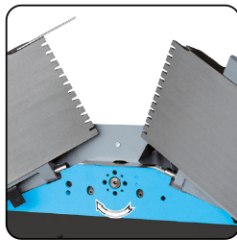
RAD310 (SINGLE-PHASE) - RAD310T (THREE-PHASE) PLANER/THICKNESSER • 310 MM



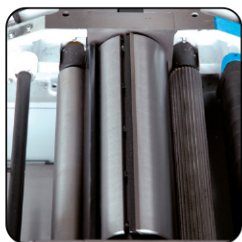
- Mechanically welded frame, rigid and strong.
- Cast iron planing table with anti-noise lips, adjustable, with a total length of 1800 mm.
- Aluminum extrusion fence mounted on a cast iron dovetail sliding plate, tiltable up to 45°, rigid and comfortably sized.
- Butterfly style opening tables with strong cast iron hinges, no need to disassemble the fence to switch to thicknessing mode.
- Digital read-out to adjust the table height in thicknessing mode.
- Cast iron planing table mounted on a central shaft Ø 110 mm and supported by a 2nd shaft outwards.
- Feeding rollers can be unclutched.
- Optional mortiser option, with M20 x 1.5 thread and 16 mm chuck.



Thickening table mounted on 2 shafts



Butterfly opening



Driving rollers Ø 40 mm, 95 mm cutterblock with 4 blades

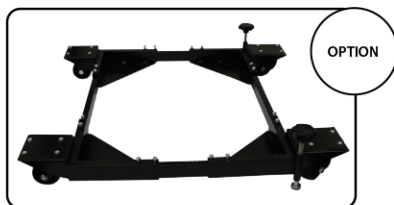


Rollers driven by chain. Double-belt motor drive

WARRANTY	2
Motor power (230 V / 400 V - 50 Hz)	2200 W - S1
Dimensions	1800 x 890 x 970 mm
Cutterblock rotation speed	4000 rpm
Cutterblock diameter	95 mm
Number of blades	4
Blade dimensions (mm)	310 x 30 x 3,0
Shaft threading for mandrel adaptation	M20 x 1,5 mm
Driver roller diameter	40 mm
Suction outlet	ø 100 mm
Planer	
Planing width	310 mm
Dimensions of tables	1800 x 315 mm
Guide dimensions	1115 x 150 mm
Guide tilt	from 90° to 135°
Cutting depth	from 0 to 3 mm
Working height	820 mm
Thicknesser	
Thicknessing width	310 mm
Thicknessing height	220 mm
Cutting depth	up to 3 mm
Feed speed	8 m/min
Table dimensions	750 x 310 mm
Net weight	310 Kg
Spare parts reference	
- Mono	210200 (+ N°/ exploded view)
- Tri	210300 (+ N°/ exploded view)
Gencod	
- Mono	3700501700313
- Tri	3700501705448
Packing	1880 x 620 x 920 mm
Gross weight	350 Kg

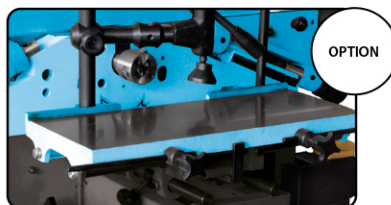
ACCESSORIES AND OPTIONS

- The machine comes with a tilting guide, 4 x steel blades, 1 blade setting gauge, a position indicator, 1 push stick, spanners and instructions manual.



REF

Universal Transport Kit 210101



REF

Mortiser option 210220

CONSUMABLES

031.30.302 P. 305
380.700.096 P. 304